



ESTIMATE

Name of Work:-Construction of Warehouse (Godown) & Cattle Feed Unit
For Shri Sai Krushi Farmers Producer Company Limited on Gat No.165, At
Post Paranda, Tq. Paranda & Dist. Osmanabad.

Estimated Cost Rs. 1.28 Crore

Name of Work:-Construction of Warehouse (Godown) & Cattle Feed Unit For Shri Sai Krushi Farmers Producer Company Limited on Gat No.165, At Post Paranda, Tq.Paranda & Dist. Osmanabad.

GENERAL REPORT

The Work Construction of SEED GODOWN (Warehouse) For Dharamrajya Shetkari Gat on Gat No.97/B, At Post Hadongri, Tq.Bhoom & Dist. Osmanabad. Is Prepared According estimate prepared, following Provisions are taken in the estimate.

- 1 Excavation for Column Footing
- 2 Providing Soling & Filling in the Foundation with sand
- 3 P.C.C M-10 for bed concrete Flooring
- 4 R.C.C Footing, Column, Beam, Slab, Chajja, Canopy, pardi, Steps
- 5 B.B Masonary in plinth and super structure
- 6 Internal & External Plastering & Painting
- 7 Cement Concrete M20 with tremix treatment for 100mm thickness for flooring
- 8 self supporting steel roofing system for Godown

And all other necessary provisions are made in the estimate. The rates adopted as per **SSR 2022-23 Basic Rates Only** Estimated cost Rs. 1.28/- Crore The early Sanction to the estimate is requested.

Handwritten signature

RES. 10/05/2020/A

Name of Work:-Construction of Warehouse (Godown) & Cattle Feed Unit For Shri Sai
Krushi Farmers Producer Company Limited on Gat No.165, At Post
Paranda,Tq.Paranda & Dist. Osmanabad.

RECAPTULATION SHEET

DESCRIPTION

A	1.Total Cost of Warehouse-Part-A)	Rs.	80,76,519.00 ✓
	2.Total Cost of Cattle Feed Unit Part-A)	Rs.	25,96,603.00
		Part A) Rs.	<u>1,06,73,122.00</u>
B	3.Royalty Charges (Warehouse)	Rs.	1,43,950.00
	4.Royalty Charges (Cattle Feed Unit)	Rs.	38,406.00
		Part B) Rs.	<u>1,82,356.00</u>
		Part(A+B) Rs.	<u>1,08,55,478.00</u>
	5.ADD 18% For GST Part-A) Warehouse	Rs. 18%	14,53,774.00 ✓
	6.ADD 18% For GST Part-A) Cattle Feed Unit	Rs. 18%	4,67,389.00
	ADD 1% For Labour Insurance	Rs. 1%	1,06,732.00
		Total Rs.	<u>1,28,83,373.00</u>
		Say Rs.	1.28 Crore

n Words

Rupees One Crore TwentyEight Lakh EightyThree Thousand Three Hundred
SeventyThree Only

RATES AS PER SSR 2022-23

Ajit
AJIT S. DAIK
Consulting Civil Engineer
Reg.No.CRC/CP/17/2020/APL/00

Name of Work:-Construction of Warehouse (Godown) & Cattle Feed Unit For Shri Sai Krushi Farmers Producer Company Limited on Gat No.165, At Post Paranda,Tq.Paranda & Dist. Osmanabad.


ABSTRACT (Warehouse)

Sr. No.	Item	Qty	Final Rate	Unit	Amount (3x4)
1	2	3	4	5	6
1	Excavation for foundation in earth, soil of all types, sand, gravel and soft murum, including removing the excavated material up to a distance of 50 m. beyond the building area and stacking and spreading as directed, dewatering, preparing the bed for the foundation and necessary back filling, ramming, watering including shoring and strutting etc. complete. (Lift up to 1.5 m.) By Mechanical Means Item No. 21.02 SSR 2022-23 IT. NO 21.02, P.No.153	50.61	207.00	Cum	10,476.00
2	Excavation for foundation in earth, soil of all types, sand, gravel and soft murum, including removing the excavated material up to a distance of 50 m. beyond the building area and stacking and spreading as directed, dewatering, preparing the bed for the foundation and necessary back filling, ramming, watering including shoring and strutting etc. complete. (Lift up to 1.5 m.) By Mechanical Means Item No. 21.06 SSR 2022-23 IT. NO 21.06, P.No.153	27.00	227.00	Cum	6,129.00
3	Providing soling using 80 mm size trap metal in 15 cm. layer including filling voids with Crushed sand/grit, ramming, watering etc. complete. SSR 2022-23 IT. NO.21.40 P.No.157	138.50	1454.00	Cum	2,01,379.00
4	Providing and laying Cast insitu/Ready Mix cement concrete in M-10 of trap/granite/quartzite/gneiss metal for foundation and bedding including bailing out water,Steel centering,formwork, laying/pumping, compacting, roughening them if special finish is to be provided,finishing if required and curing complete,with fully automatic microprocessor based PLCwith SCADA enabled reversible Drum Type mixer/concrete Batch mixplant (Paumixer)etc.complete.With fine aggregate (Natural Sand/Crushed sand VSI Grade finisher etc.) SSR 2022-23 IT. NO 24.01, P.No.175	146.53	5830.00	Cum	8,54,270.00
5	Providing and laying in situ /Ready Mix cement concrete M-20 of trap / granite /quartzite/ gneiss metal for R.C.C. work in foundations like raft, strip foundations, grillage and footings of R.C.C. columns and steel stanchions etc. including bailing out water, Steel centring formwork, laying/pumping cover blocks, compaction and curing roughening the surface if special finish is to be provided (Excluding reinforcement and structural steel) etc. complete, with fully automatic microprocessor based PLC with SCADA enabled SSR 2022-23 IT. NO 25.11, P.No.178	14.52	7104.00	Cum	103150.00

Sr. No.	Item	Qty	Final Rate	Unit	Amount (3x4)
6	Providing and laying Cast in situ/Ready Mix cement concrete M-20 of trap / granite /quartzite/ gneiss metal for R.C.C. columns as per detailed designs and drawing or as directed including steel centring, formwork, cover blocks, laying/pumping, compaction finishing the formed surfaces with cement mortar 1:3 of sufficient minimum thickness to give a smooth and even surface or roughening if special finish is to be provided and curing etc. complete, (Excluding reinforcement and structural steel). with fully automatic microprocessor based PLC with SCADA enabled reversible Drum Type mixer/ concrete Batch mix plant (Pan mixer) etc. complete. With fine aggregate (Natural Sand / Crushed sand VSI Grade finely washed etc).	43.77	13783.00	Cum	6,03,282.00
	SSR 2022-23 IT. NO 25.31,P.No.179				
7	Providing and laying Cast in situ/Ready Mix cement concrete M-20 of trap / granite /quartzite/ gneiss metal for R.C.C. beams and lintels as per detailed designs and drawings or as directed including steel centring, formwork, cover blocks, laying/pumping, compaction and roughening the surface if special finish is to be provided and curing etc. complete. (Excluding reinforcement and structural steel). with fully automatic microprocessor based PLC with SCADA enabled reversible Drum Type mixer/ concrete Batch mix plant (Pan mixer) etc. complete. With fine aggregate (Natural Sand / Crushed sand VSI Grade finely washed etc).	27.45	12269.00	Cum	3,36,784.00
	SSR 2022-23 IT. NO 25.50 P.No.181				
8	Providing second class Burnt Brick masonry with conventional/ I.S. type bricks in cement mortar 1:6 in foundations and plinth of inner walls/ in plinth external walls including bailing out water manually, striking joints on unexposed faces, raking out joints on exposed faces and watering etc. Complete.	9.89	7755.00	Cum	76,697.00
	SSR 2022-23 IT. NO.27.01 P.No.197				
9	Providing and laying Cast in situ/Ready Mix cement concrete M-20 of trap/ granite/ quartzite/ gneiss metal for R.C.C. chajja as per detailed design and drawings including steel centering, formwork, cover blocks compacting , curing , finishing and roughening the surface if special finish is to be provided and curing complete. (Excluding reinforcement and structural steel).with fully automatic micro processor based PLC with SCADA enabled reversible Drum Type mixer/ concrete Batch mix plant (Pan mixer) etc. complete. With fine aggregate (Natural Sand /Crushed sand VSI Grade finely washed etc).	1.57	13932.00	Cum	21,873.00
	SSR 2022-23 IT. NO 26.05 P.No.184				
10	Providing and fixing in position TMT - FE - 500 bar reinforcement of various diameters for R.C.C. pile caps, footings, foundations, slabs, beams columns, canopies, staircase, newels, chajja, lintels, pardis, copings, fins, arches etc. as per detailed designs, drawings and schedules. including cutting, bending, hooking the bars, binding with wires or tack welding and supporting as required complete.	8.29	89703.00	MT	7,43,638.00
	SSR 2022-23 IT. NO 26.33, P.No.188				

Sr. No.	Item	Qty	Final Rate	Unit	Amount (3x4)
11	Filling in plinth and floors with approved excavated material in 15cm. to 20cm. layers including watering and compacting etc. complete. SSR 2022-23 IT. NO.21.36 P.No.157	21.60	120.00	Cum	2,592.00
12	Filling in plinth and floors with contractors material/brought from outside and approved by Engineer incharge in layers of 15 cm to 20 cm including watering and compaction etc. complete. SSR 2022-23 IT. NO.21.37 P.No.157	399.20	599.00	Cum	2,39,121.00
13	Providing second class Burnt Brick masonry with conventional/I.S. type bricks in cement mortar 1:6 in superstructure including striking joints, raking out joints, watering and scaffolding etc. Complete SSR 2022-23 IT. NO.27.05 P.No.197	122.60	7994.00	Cum	9,80,064.00
14	Providing and fixing steel window C.R.C. sheet as per I.S. 1513 : 1986. gauge sect. 65 x 40 x 25 mm shutter single sheet of 24 gauge single leaf joined by fusion welding at appropriate points with vertical grooves of 15 mm wide and 15 mm deep at a distance of 45 mm. The first and last rib should be 60 mm away from vertical edge of the shutter. the shutter shall be welded, with angle to from the periphery of the shutter. At the center of the frame there shall be angle welded to bifurcate the frame into segments with two leaf shutter square 12 mm square guard bars at 120 mm center with all accessories. SSR 2022-23 IT. NO 39.21, P.No.247	23.40	4345.00	Sqm	1,01,673.00
15	Providing and fixing rolling shutter fabricated from steel laths of minimum thickness 0.9 mm with lock plate of 3.15 mm thickness reinforced with 35 x 35 x 5 mm angle section fitted with sliding bolts and handles for both sides, deep M.S. channel section of depth and thickness not less than 65 mm and 3.15 mm respectively with hold fast arrangements, M.S. Bracket plate 300 x 300 x 3.15 mm minimum size and shape with square bar, suspension shaft of minimum 32 mm diameter, hood cover of M.S. sheet not less than 0.9 mm thickness and of any size at top and safety devices including mechanical gear operation consisting of worm gear wheels and worms of high grade cast iron or mild steel and one coat of red lead primer etc. complete. (I.S. 62481979) (Without mechanical gear) SSR 2022-23 IT. NO 39.24, P.No.248	49.50	4829.00	Sqm	2,39,036.00
16	Providing internal cement plaster 12mm thick in single coat in cement mortar 1:5 without neeru finish to concrete or brick surfaces, in all positions including scaffolding and curing etc. complete. SSR 2022-23 IT. NO.32.03 P.No.209	614.87	271.00	Sqm	166630.00

Sr. No.	Item	Qty	Final Rate	Unit	Amount (3x4)
17	Providing internal cement plaster 20mm thick in two coats in cement mortar 1:5 without neeru finish, to concrete, brick surface, in all positions including scaffolding and curing etc. complete SSR 2022-23 IT. NO 32.06 P.No.209	563.98	375.00	Sqm	2,11,493.00
18	Providing and laying Rough Shahabad Stone Flooring 40mm to 45 mm. thick and of required width in plain/ diamond pattern on a bed of 1:6 C.M. including cement float, striking joints, pointing in cement mortar 1:3 curing and cleaning etc. etc. complete SSR 2022-23 IT. NO 33.02, P.No.213	907.98	791.00	Sqm	7,18,212.00
19	Providing and fixing self supporting steel roofing system (Proflex) for a Godown or alike made up of structural grade steel sheet of 912 millimeter width (tolerance +/- 2 millimeter), moulded at site using mechanical press dies to the desired curve and shape to form 605 millimeter wide interlocking panels . The interlocking panels shall be pressed to close the seam forming water tight joints for a span of 15.30 meter having arch rise as 3.06 meter, arch length 17.75 meter. The base material made up of imported galvalume steel complying to ASTM A 792 having base metal thickness of 0.80 millimeter () SSR 2022-23 IT. NO 38.41, P.No.239	983.27	2264.00	Sqm	22,26,119.00
20	Providing and fixing corrugated galvanised iron sheets of 0.63mm thick (24 B.W.G.) for roofing without wind tiles including fastening with galvanised iron screws and bolts, lead and bitumen washers as per drawing etc. complete. (Weight of 5.5 kg/sq.m.) SSR 2022-23 IT. NO 38.04, P.No.233	77.05	870.00	Sqm	67,034.00
21	Providing second class Burnt Brick masonry with conventional I.S. type bricks in cement mortar 1:4 in half brick thick wall including mild steel longitudinal reinforcement of 2 bars of 6 mm diameter / 2 hoop iron strins 25 mm X 1.6 mm placed at every third course. SSR 2022-23 IT. NO.27.06 P.No.197	82.93	1119.00	Sqm	92,799.00
22	Providing and applying two coats of water proof cement paint of approved manufacture and of approved colour to the plastered surfaces including scaffolding if necessary, cleaning and preparing the surface, watering for two days etc. complete. SSR 2022-23 IT. NO 35.13, P.No.224	563.98	79.00	Sqm	44,554.00
23	Providing and applying washable oil-bound distemper of approved colour and shade to old and new surfaces in two coats including scaffolding, preparing the surfaces. (excluding the primer coat.) etc. complete. SSR 2022-23 IT. NO 36.11, P.No.227	614.87	48.00	Sqm	29,514.00
24	Royalty Charges for murrum, soil, 60mm./40mm. Metal (Hand Broken) etc.	640.27	216.18	Cum	1,38,414.00
25	Royalty Charges for Sand	23.32	237.37	Cum	5,536.00
				Royalty Charges	1,43,950.00
				Total Work Portion=	80,76,519.00


AARTI M. BAIG
 Consulting Civil Engineer
 P. No. 100M/R/2020/APL/03103

Name of Work:-Construction of Warehouse (Godown) & Cattle Feed Unit For Shri Sai Krushi Farmers Producer Company Limited on Gat No.165, At Post Paranda, Tq.Paranda & Dist. Osmanabad.

MEASUREMENT SHEET (Warehouse)

IT	ITEM	No.	L	W	H/D	QTY	UNIT
			In Mtr.	In Mtr.	In Mtr.		
1	Excavation for foundation in earth, soil of all types, sand, gravel and soft murum, including removing the excavated material up to a distance of 50 m. beyond the building area and stacking and spreading as directed, dewatering, preparing the bed for the foundation and necessary back filling, ramming, watering including shoring and strutting etc. complete. (Lift up to 1.5 m.) By Mechanical Means Item No. 21.02						
	SSR 2022-23 IT. NO 21.02, P.No.153						
	For Column Footing	16	1.50	1.50	0.90	32.40	
	For External Plinth Beams	9	5.80	0.45	0.30	7.05	
	For Ramp	3	6.14	0.45	0.30	2.49	
				Total	50.61	Cum	
2	Excavation for foundation in earth, soil of all types, sand, gravel and soft murum, including removing the excavated material up to a distance of 50 m. beyond the building area and stacking and spreading as directed, dewatering, preparing the bed for the foundation and necessary back filling, ramming, watering including shoring and strutting etc. complete. (Lift up to 1.5 m.) By Mechanical Means Item No. 21.06						
	SSR 2022-23 IT. NO 21.06, P.No.153						
	For Column Footings	16	1.50	1.50	0.75	27.00	
					Total	27.00	Cu.M
3	Providing soling using 80 mm size trap metal in 15 cm. layer including filling voids with Crushed sand/grit, ramming, watering etc. complete.						
	SSR 2022-23 IT. NO.21.40 P.No.157						
	For Below Flooring PCC						
	Front Ramp	1	24.54	37.00	0.15	136.20	
		1	6.14	2.50	0.15	2.30	
				Total	138.50	Cu.M	
4	Providing and laying Cast insitu/Ready Mix cement concrete in M-10 of trap/granite/quartzite/gneiss metal for foundation and bedding including bailing out water, Steel centering, formwork, laying/pumping, compacting, roughening them if special finish is to be provided, finishing if required and curing complete, with fully automatic microprocessor based PLC with SCADA enabled reversible Drum Type mixer/concrete Batch mix plant (Panmixer) etc. complete. With fine aggregate (Natural Sand/Crushed sand VSI Grade finely washed etc).						
	SSR 2022-23 IT. NO 24.01, P.No.175						
	For Column Footing	16	1.50	1.50	0.15	5.40	
	Warehouse	1	24.54	37.00	0.15	136.20	
	Front Ramp	2	6.14	2.50	0.15	4.61	
	1	6.14	0.35	0.15	0.32		

IT	ITEM	No.	L	W	H / D	QTY	UNIT
			In Mtr.	In Mtr.	In Mtr.		
					Total	146.53	Cu.M
5	Providing and laying in situ /Ready Mix cement concrete M-20 of trap / granite /quartzite/ gneiss metal for R.C.C. work in foundations like raft, strip foundations, grillage and footings of R.C.C. columns and steel stanchions etc. including bailing out water, Steel centring formwork, laying/pumping cover blocks, compaction and curing roughening the surface if special finish is to be provided (Excluding reinforcement and structural steel) etc. complete, with fully automatic microprocessor based PLC with SCADA enabled reversible Drum Type mixer/ concrete Batch mix plant (Pan mixer) etc. complete. With fine aggregate (Natural Sand / Crushed sand VSI Grade finely washed etc)						
	SSR 2022-23 IT. NO 25.11, P.No.178						
	Column footings	16	1.20	1.20	0.63	14.52	
					Total	14.52	Cu.M
6	Providing and laying Cast in situ/Ready Mix cement concrete M-20 of trap / granite /quartzite/ gneiss metal for R.C.C. columns as per detailed designs and drawing or as directed including steel centring, formwork, cover blocks, laying/pumping, compaction finishing the formed surfaces with cement mortar 1:3 of sufficient minimum thickness to give a smooth and even surface or roughening if special finish is to be provided and curing etc. complete,(Excluding reinforcement and structural steel).with fully automatic microprocessor based PLC with SCADA enabled reversible Drum Type mixer/ concrete Batch mix plant (Pan mixer) etc. complete. With fine aggregate (Natural Sand / Crushed sand VSI Grade finely washed etc)						
	SSR 2022-23 IT. NO 25.31,P.No.179						
	For Column upto G.L	16	0.60	0.60	0.90	5.18	
	For Column Above G.L	16	0.60	0.60	6.70	38.59	
					Total	43.77	Cu.M
7	Providing and laying Cast in situ/Ready Mix cement concrete M-20 of trap / granite /quartzite/ gneiss metal for R.C.C. beams and lintels as per detailed designs and drawings or as directed including steel centring, formwork, cover blocks, laying/pumping, compaction and roughening the surface if special finish is to be provided and curing etc. complete. (Excluding reinforcement and structural steel). with fully automatic microprocessor based PLC with SCADA enabled reversible Drum Type mixer/ concrete Batch mix plant (Pan mixer) etc. complete. With fine aggregate (Natural Sand / Crushed sand VSI Grade finely washed etc)						
	SSR 2022-23 IT. NO 25.50 P.No.181						
	For G.L Beams	6	5.50	0.23	0.45	3.42	
	Lintels	10	5.54	0.23	0.45	5.73	
		6	5.50	0.23	0.45	3.42	
	Roof Beams	10	5.54	0.23	0.45	5.73	
		6	5.50	0.23	0.45	3.42	
		10	5.54	0.23	0.45	5.73	
					Total	27.45	Cu.M

IT	ITEM	No.	L	W	H / D	QTY	UNIT
			In Mtr.	In Mtr.	In Mtr.		
8	Providing second class Burnt Brick masonry with conventional/ I.S. type bricks in cement mortar 1:6 in foundations and plinth of inner walls/ in plinth external walls including bailing out water manually, striking joints on unexposed faces, raking out joints on exposed faces and watering etc. Complete.						
SSR 2022-23 IT. NO.27.01 P.No.197							
	On External Upto GL	6	5.54	0.23	0.30	2.29	
	Ramp Walls Upto GL	10	5.80	0.23	0.30	4.00	
	Ramp Walls Above GL	4	6.14	0.23	0.30	1.69	
		6	6.14	0.23	(0.45+0.0)/2	1.91	
					Total	9.89	Cu.M
9	Providing and laying Cast in situ/Ready Mix cement concrete M-20 of trap/ granite/ quartzite/ gneiss metal for R.C.C. chajja as per detailed design and drawings including steel centering, formwork, cover blocks compacting, curing, finishing and roughening the surface if special finish is to be provided and curing complete. (Excluding reinforcement and structural steel), with fully automatic micro processor based PLC with SCADA enabled reversible Drum Type mixer/ concrete Batch mix plant (Pan mixer) etc. complete. With fine aggregate (Natural Sand /Crushed sand VSI Grade finely washed etc)						
SSR 2022-23 IT. NO 26.05 P.No.184							
	W				(0.10+0.075)/2		
	RS	13	1.65	0.45	0.09	0.87	
		3	5.80	0.45	0.09	0.70	
					Total	1.57	Cu.M
10	Providing and fixing in position TMT - FE - 500 bar reinforcement of various diameters for R.C.C. pile caps, footings, foundations, slabs, beams columns, canopies, staircase, newels, chajja, lintels pardis, copings, fins, arches etc. as per detailed designs, drawings and schedules. including cutting, bending, hooking the bars, binding with wires or tack welding and supporting as required complete.						
SSR 2022-23 IT. NO 26.33, P.No.188							
			RCC Qty	Kg/Cum		Steel In Kg	
	Footing	1	14.52	75.00		1089.00	
	Column	1	43.77	100.00		4377.00	
	Beams	1	27.45	100.00		2745.00	
	Chajja	1	1.57	50.00		78.50	
					Total	8289.50	Kg.
						8.29	M.T
11	Filling in plinth and floors with approved excavated material in 15cm. to 20cm. layers including watering and compacting etc. complete.						
SSR 2022-23 IT. NO.21.36 P.No.157							
	80% Qty As per It No.2	1	21.60			21.60	
					Total	21.60	Cu.M

IT	ITEM	No.	L	W	H/D	QTY	UNIT
			In Mtr.	In Mtr.	In Mtr.		
12	Filling in plinth and floors with contractors material/brought from outside and approved by Engineer incharge in layers of 15 cm to 20 cm including watering and compaction etc. complete.						
	SSR 2022-23 IT. NO.21.37 P.No.157						
	Column Trenches Refilling	16	1.50	1.50	0.90	32.40	
	Deduct Qty as per It.No.11					-21.60	
	Deduct Vol.PCC of Footing					-14.52	
	Ramp	2	5.69	5.54	0.09	-5.67	
	Hall	1	24.54	37.00	0.45	408.59	
					Total	399.20	Cu.M
13	Providing second class Burnt Brick masonry with conventional/ I.S. type bricks in cement mortar 1:6 in superstructure including striking joints, raking out joints, watering and scaffolding etc. Complete						
	SSR 2022-23 IT. NO.27.05 P.No.197						
	On External Plinth Beams	9	5.50	0.23	5.50	62.62	
		11	5.54	0.23	5.50	77.09	
	Deductions						
	R.S						
	W	-3	5.50	0.23	3.80	-14.42	
		-13	1.50	0.23	0.60	-2.69	
					Total	122.60	CuM
14	Providing and fixing steel window C.R.C. sheet as per I.S. 1513 : 1986. gauge sect. 65 x 40 x 25 mm shutter single sheet of 24 gauge single leaf joined by fusion welding at appropriate points with vertical grooves of 15 mm wide and 15 mm deep at a distance of 45 mm. The first and last rib should be 60 mm away from vertical edge of the shutter. the shutter shall be welded, with angle to from the periphery of the shutter. At the center of the frame there shall be angle welded to bifurcate the frame into segments with two leaf shutter square 12 mm square guard bars at 120° mm center with all accessories						
	SSR 2022-23 IT. NO 39.21, P.No.247						
	W	13	1.50		1.20	23.40	
					Total	23.40	Sq.M
15	Providing and fixing rolling shutter fabricated from steel laths of minimum thickness 0.9 mm with lock plate of 3.15 mm thickness reinforced with 35 x 35 x 5 mm angle section fitted with sliding bolts and handles for both sides, deep M.S. channel section of depth and thickness not less than 65 mm and 3.15 mm respectively with hold fast arrangements, M.S. Bracket plate 300 x 300 x 3.15 mm minimum size and shape with square bar, suspension shaft of minimum 32 mm diameter, hood cover of M.S. sheet not less than 0.9 mm thickness and of any size at top and safety devices including mechanical gear operation arrangement consisting of worm gear wheels and worms of high grade cast iron or mild steel and one coat of red lead primer etc. complete. (I.S. 62481979) (Without mechanical gear)						
	SSR 2022-23 IT. NO 39.24, P.No.248						
	R.S	3	5.50		3.00	49.50	
					Total	49.50	Sq.M

IT	ITEM	No.	L	W	H / D	QTY	UNIT
			In Mtr.	In Mtr.	In Mtr.		
16	Providing internal cement plaster 12mm thick in single coat in cement mortar 1:5 without neeru finish to concrete or brick surfaces, in all positions including scaffolding and curing etc. complete.						
	SSR 2022-23 IT. NO.32.03 P.No.209						
	Internal Walls	1	24.54		5.50	134.97	
		2	37.00		5.50	407.00	
	RS	3	5.50		3.00	49.50	
	W	13	1.50		1.20	23.40	
					Total	614.87	Sq.M
17	Providing internal cement plaster 20mm thick in two coats in cement mortar 1:5 without neeru finish, to concrete, brick surface, in all positions including scaffolding and curing etc. complete						
	SSR 2022-23 IT. NO 32.06 P.No.209						
	Externally						
	Front Sides	2	1.50		6.70	20.10	
	Hall Sides	2	37.46		6.70	501.96	
	Plinth	1	25.16		0.75	18.87	
		2	37.46		0.75	56.19	
	Chajja Plaster(13x2)	26	1.65	0.45		19.31	
	(1x2)	3	6.75	0.45		9.11	
	Deductions						
	R.S	-3	5.54		3.00	-49.86	
	W	-13	1.50		0.60	-11.70	
					Total	563.98	Sq.M
18	Providing and laying Rough Shahabad Stone Flooring 40mm to 45 mm. thick and of required width in plain/ diamond pattern on a bed of 1:6 C.M. including cement float, striking joints, pointing in cement mortar 1:3 curing and cleaning etc. etc. complete						
	SSR 2022-23 IT. NO 33.02, P.No.213						
	WareHouse	1	24.54	37.00		907.98	
					Total	907.98	Sq.M
19	Providing and fixing self supporting steel roofing system (Proflex) for a Godown or alike made up of structural grade steel sheet of 912 millimeter width (tolerance +/- 2 millimeter), moulded at site using mechanical press dies to the desired curve and shape to form 605 millimeter wide						
	SSR 2022-23 IT. NO 38.04, P.No.233						
	Roof	1	25.74	38.20		983.27	
						983.27	SqM
20	Providing and fixing corrugated galvanised iron sheets of 0.63mm thick (24 B.W.G.)for roofing without wind tiles including fastening with galvanised iron screws and bolts,lead and bitumen washers as per drawing etc.complete.(Weight of 5.5 kg/sq.m.).						
	SSR 2022-23 IT. NO 38.04, P.No.233						
	Gable End	1	77.05			77.05	
						77.05	SqM

IT	ITEM	No.	L	W	H/D	QTY	UNIT
			In Mtr.	In Mtr.	In Mtr.		
21	Providing second class Burnt Brick masonry with conventional/I.S. type bricks in cement mortar 1:4 in half brick thick wall including mild steel longitudinal reinforcement of 2 bars of 6 mm diameter / 2 hoop iron strips 25 mm X 1.6 mm placed at every third course, properly bent and bonded at ends scaffolding, racking out joints and watering etc. complete. SSR 2022-23 IT. NO.27.06 P.No.197						
	Partition Wall	1	21.54		3.85	82.93	
						82.93	SqM
22	Providing and applying two coats of water proof cement paint of approved manufacture and of approved colour to the plastered surfaces including scaffolding if necessary, cleaning and preparing the surface, watering for two days etc. complete. SSR 2022-23 IT. NO 35.13, P.No.224						
	Qty as per I No.17						
						563.98	
						563.98	SqM
23	Providing and applying washable oil-bound distemper of approved colour and shade to old and new surfaces in two coats including scaffolding, preparing the surfaces. (excluding the primer coat) etc. complete. SSR 2022-23 IT. NO 35.13, P.No.224						
	Qty as per I No.16						
						614.87	
						614.87	SqM
24	Royalty Charges for murrum, soil, 60mm./40mm. Metal (Hand Broken) etc.						
	Soling Qty as per I No.3	138.50	X	1.00		138.50	
	PCC Qty as per I No.4	146.53	X	0.70		102.57	
	For Murrum as per I No.12	399.20	X	1.00		399.20	
						640.27	CuM
25	Royalty Charges for murrum, soil, 60mm./40mm. Metal (Hand Broken) etc.						
	12mm plaster Qty as per I No.16	614.87	X	0.015		9.22	
	20mm plaster Qty as per I No.17	563.98	X	0.025		14.10	
						23.32	CuM

Acit
 RAJESH K. RAIG
 RAJESH K. RAIG
 RAJESH K. RAIG

Name of Work:-Construction of Warehouse (Godown) & Cattle Feed Unit For Shri Sai Krushi Farmers Producer Company Limited on Gat No.165, At Post Paranda,Tq.Paranda & Dist. Osmanabad.

ABSTRACT (Machinery)

Sr. No.	Item	Qty	Final Rate	Unit	Amount (3x4)
1	Excavation for foundation in earth, soil of all types, sand, gravel and soft murum, including removing the excavated material up to a distance of 50 m. beyond the building area and stacking and spreading as directed, dewatering, preparing the bed for the foundation and necessary back filling, ramming, watering including shoring and strutting etc. complete. (Lift up to 1.5 m.) By Mechanical Means Item No. 21.02 SSR 2022-23 IT. NO 21.02, P.No.153	12.44	207.00	Cum	2,575.00
2	Excavation for foundation in earth, soil of all types, sand, gravel and soft murum, including removing the excavated material up to a distance of 50 m. beyond the building area and stacking and spreading as directed, dewatering, preparing the bed for the foundation and necessary back filling, ramming, watering including shoring and strutting etc. complete. (Lift up to 1.5 m.) By Mechanical Means Item No. 21.06 SSR 2022-23 IT. NO 21.06, P.No.153	7.09	227.00	Cum	1,609.00
3	Providing soling using 80 mm size trap metal in 15 cm. layer including filling voids with Crushed sand/grit, ramming, watering etc. complete. SSR 2022-23 IT. NO.21.40 P.No.157	44.39	1454.00	Cum	64,543.00
4	Providing and laying Cast insitu/Ready Mix cement concrete in M-10 of trap/granite/quartzite/gneiss metal for foundation and bedding including bailing out water,Steel centering,formwork, laying/pumping, compacting, roughening them if special finish is to be provided,finishing if required and curing complete,with fully automatic microprocessor based PLCwith SCADA enabled reversible Drum Type mixer/concrete Batch mixplant (Panmixer)etc.complete.With fine aggregate (Natural Sand/Crushed sand VSI Grade final crushed etc) SSR 2022-23 IT. NO 24.01, P.No.175	31.36	5830.00	Cum	1,82,829.00
5	Providing and laying in situ /Ready Mix cement concrete M-20 of trap / granite /quartzite/ gneiss metal for R.C.C. work in foundations like raft, strip foundations, grillage and footings of R.C.C. columns and steel stanchions etc. including bailing out water, Steel centring formwork, laying/pumping cover blocks, compaction and curing roughening the surface if special finish is to be provided (Excluding reinforcement and structural steel) etc. complete, with fully automatic microprocessor based PLC with SCADA enabled SSR 2022-23 IT. NO 25.11, P.No.178	6.35	7104.00	Cum	45110.00

Sr. No.	Item	Qty	Final Rate	Unit	Amount (3x4)
6	Providing and laying Cast in situ/Ready Mix cement concrete M-20 of trap / granite / quartzite/ gneiss metal for R.C.C. columns as per detailed designs and drawing or as directed including steel centring, formwork, cover blocks, laying/pumping, compaction finishing the formed surfaces with cement mortar 1:3 of sufficient minimum thickness to give a smooth and even surface or roughening if special finish is to be provided and curing etc. complete, (Excluding reinforcement and structural steel). with fully automatic microprocessor based PLC with SCADA enabled reversible Drum Type mixer/ concrete Batch mix plant (Pan mixer) etc. complete. With fine aggregate (Natural Sand / Crushed sand VSI Grade finely washed etc)	19.15	13783.00	Cum	2,63,944.00
	SSR 2022-23 IT. NO 25.31, P.No.179				
7	Providing and laying Cast in situ/Ready Mix cement concrete M-20 of trap / granite / quartzite/ gneiss metal for R.C.C. beams and lintels as per detailed designs and drawings or as directed including steel centring, formwork, cover blocks, laying/pumping, compaction and roughening the surface if special finish is to be provided and curing etc. complete. (Excluding reinforcement and structural steel). with fully automatic microprocessor based PLC with SCADA enabled reversible Drum Type mixer/ concrete Batch mix plant (Pan mixer) etc. complete. With fine aggregate (Natural Sand / Crushed sand VSI Grade finely washed etc)	13.74	12269.00	Cum	1,68,576.00
	SSR 2022-23 IT. NO 25.50 P.No.181				
8	Providing second class Burnt Brick masonry with conventional/ LS type bricks in cement mortar 1:6 in foundations and plinth of inner walls/ in plinth external walls including bailing out water manually, striking joints on unexposed faces, raking out joints on exposed faces and watering etc. Complete.	5.36	7755.00	Cum	41,567.00
	SSR 2022-23 IT. NO.27.01 P.No.197				
9	Providing and laying Cast in situ/Ready Mix cement concrete M-20 of trap/ granite/ quartzite/ gneiss metal for R.C.C. chajja as per detailed design and drawings including steel centering, formwork, cover blocks compacting, curing, finishing and roughening the surface if special finish is to be provided and curing complete. (Excluding reinforcement and structural steel). with fully automatic micro processor based PLC with SCADA enabled reversible Drum Type mixer/ concrete Batch mix plant (Pan mixer) etc. complete. With fine aggregate (Natural Sand /Crushed sand VSI Grade finely washed etc)	1.44	13932.00	Cum	20,062.00
	SSR 2022-23 IT. NO 26.05 P.No.184				
10	Providing and fixing in position TMT - FE - 500 bar reinforcement of various diameters for R.C.C. pile caps, footings, foundations, slabs, beams columns, canopies, staircase, newels, chajja, lintels pardis, copings, fins, arches etc. as per detailed designs, drawings and schedules. including cutting, bending, hooking the bars, binding with wires or tack welding and supporting as required complete.	3.68	89703.00	MT	3,30,017.00
	SSR 2022-23 IT. NO 26.33, P.No.188				

Sr. No.	Item	Qty	Final Rate	Unit	Amount (3x4)
11	Filling in plinth and floors with approved excavated material in 15cm. to 20cm. layers including watering and compacting etc. complete. SSR 2022-23 IT. NO.21.36 P.No.157	5.67	120.00	Cum	680.00
12	Filling in plinth and floors with contractors material/brought from outside and approved by Engineer incharge in layers of 15 cm to 20 cm including watering and compaction etc. complete. SSR 2022-23 IT. NO.21.37 P.No.157	105.74	599.00	Cum	63,338.00
13	Providing second class Burnt Brick masonry with conventional/ L.S. type bricks in cement mortar 1:6 in superstructure including striking joints, raking out joints, watering and scaffolding etc. Complete SSR 2022-23 IT. NO.27.05 P.No.197	12.74	7994.00	Cum	1,01,844.00
14	Providing and fixing steel window C.R.C. sheet as per I.S. 1513 : 1986. gauge sect. 65 x 40 x 25 mm shutter single sheet of 24 gauge single leaf joined by fusion welding at appropriate points with vertical grooves of 15 mm wide and 15 mm deep at a distance of 45 mm. The first and last rib should be 60 mm away from vertical edge of the shutter. the shutter shall be welded, with angle to from the periphery of the shutter. At the center of the frame there shall be angle welded to bifurcate the frame into segments with two leaf shutter square 12 mm square guard bars at 120 mm center with all accessories. SSR 2022-23 IT. NO 39.21, P.No.247	12.60	4345.00	Sqm	54,747.00
15	Providing and fixing rolling shutter fabricated from steel laths of minimum thickness 0.9 mm with lock plate of 3.15 mm thickness reinforced with 35 x 35 x 5 mm angle section fitted with sliding bolts and handles for both sides, deep M.S. channel section of depth and thickness not less than 65 mm and 3.15 mm respectively with hold fast arrangements, M.S. Bracket plate 300 x 300 x 3.15 mm minimum size and shape with square bar, suspension shaft of minimum 32 mm diameter, hood cover of M.S. sheet not less than 0.9 mm thickness and of any size at top and safety devices including mechanical gear operation arrangement consisting of worm gear wheels and worms of high grade cast iron or mild steel and one coat of red lead primer etc. complete. (I.S. 62481979) (Without mechanical gear) SSR 2022-23 IT. NO 39.24, P.No.248	16.62	4829.00	Sqm	80,258.00
16	Providing internal cement plaster 12mm thick in single coat in cement mortar 1:5 without neeru finish to concrete or brick surfaces, in all positions including scaffolding and curing etc. complete. SSR 2022-23 IT. NO.32.03 P.No.209	189.80	271.00	Sqm	51436.00

Name of Work:-Construction of Warehouse (Godown) & Cattle Feed Unit For Shri Sai Krushi Farmers Producer Company Limited on Gat No.165, At Post Paranda, Tq.Paranda & Dist. Osmanabad.

MEASUREMENT SHEET (Machinery)

IT	ITEM	No.	L	W	H/D	QTY	UNIT
			In Mtr.	In Mtr.	In Mtr.		
1	Excavation for foundation in earth, soil of all types, sand, gravel and soft murum, including removing the excavated material up to a distance of 50 m. beyond the building area and stacking and spreading as directed, dewatering, preparing the bed for the foundation and necessary back filling, ramming, watering including shoring and strutting etc. complete. (Lift up to 1.5 m.) By Mechanical Means Item No. 21.02						
	SSR 2022-23 IT. NO 21.02, P.No.153						
	For Column Footing	7	1.50	1.50	0.60	9.45	
	For External Plinth Beams	4	5.54	0.45	0.30	2.99	
				Total	12.44	Cum	
2	Excavation for foundation in earth, soil of all types, sand, gravel and soft murum, including removing the excavated material up to a distance of 50 m. beyond the building area and stacking and spreading as directed, dewatering, preparing the bed for the foundation and necessary back filling, ramming, watering including shoring and strutting etc. complete. (Lift up to 1.5 m.) By Mechanical Means Item No. 21.06						
	SSR 2022-23 IT. NO 21.06, P.No.153						
	For Column Footings	7	1.50	1.50	0.45	7.09	
					Total	7.09	Cu.M
3	Providing soling using 80 mm size trap metal in 15 cm. layer including filling voids with Crushed sand/grit, ramming, watering etc. complete.						
	SSR 2022-23 IT. NO.21.40 P.No.157						
	For Below Flooring PCC	1	24.54	12.06	0.15	44.39	
				Total	44.39	Cu.M	
4	Providing and laying Cast insitu/Ready Mix cement concrete in M-10 of trap/granite/quartzite/gneiss metal for foundation and bedding including bailing out water, Steel centering, formwork, laying/pumping, compacting, roughening them if special finish is to be provided, finishing if required and curing complete, with fully automatic microprocessor based PLC with SCADA enabled reversible Drum Type mixer/concrete Batch mix plant (Pan mixer) etc. complete. With fine aggregate (Natural Sand/Crushed sand VSI Grade finely washed etc).						
	SSR 2022-23 IT. NO 24.01, P.No.175						
	For Column Footing	7	1.50	1.50	0.10	1.58	
	Warehouse	1	24.54	12.06	0.10	29.60	
		2	2.50	0.35	0.10	0.18	
				Total	31.36	Cu.M	

IT	ITEM	No.	L	W	H/D	QTY	UNIT
			In Mtr.	In Mtr.	In Mtr.		
5	Providing and laying in situ /Ready Mix cement concrete M-20 of trap / granite /quartzite/ gneiss metal for R.C.C. work in foundations like raft, strip foundations, grillage and footings of R.C.C. columns and steel stanchions etc. including bailing out water, Steel centring formwork, laying/pumping cover blocks, compaction and curing roughening the surface if special finish is to be provided (Excluding reinforcement and structural steel) etc. complete, with fully automatic microprocessor based PLC with SCADA enabled reversible Drum Type mixer/ concrete Batch mix plant (Pan mixer) etc. complete. With fine aggregate (Natural Sand / Crushed sand VSI Grade finely washed etc)						
	SSR 2022-23 IT. NO 25.11, P.No.178						
	Column footings	7	1.20	1.20	0.63	6.35	
					Total	6.35	Cu.M
6	Providing and laying Cast in situ/Ready Mix cement concrete M-20 of trap / granite /quartzite/ gneiss metal for R.C.C. columns as per detailed designs and drawing or as directed including steel centring, formwork, cover blocks, laying/pumping, compaction finishing the formed surfaces with cement mortar 1:3 of sufficient minimum thickness to give a smooth and even surface or roughening if special finish is to be provided and curing etc. complete,(Excluding reinforcement and structural steel).with fully automatic microprocessor based PLC with SCADA enabled reversible Drum Type mixer/ concrete Batch mix plant (Pan mixer) etc. complete. With fine aggregate (Natural Sand / Crushed sand VSI Grade finely washed etc)						
	SSR 2022-23 IT. NO 25.31,P.No.179						
	For Column upto G.L	7	0.60	0.60	0.90	2.27	
	For Column Above G.L	7	0.60	0.60	6.70	16.88	
					Total	19.15	Cu.M
7	Providing and laying Cast in situ/Ready Mix cement concrete M-20 of trap / granite /quartzite/ gneiss metal for R.C.C. beams and lintels as per detailed designs and drawings or as directed including steel centring, formwork, cover blocks, laying/pumping, compaction and roughening the surface if special finish is to be provided and curing etc. complete. (Excluding reinforcement and structural steel). with fully automatic microprocessor based PLC with SCADA enabled reversible Drum Type mixer/ concrete Batch mix plant (Pan mixer) etc. complete. With fine aggregate (Natural Sand / Crushed sand VSI Grade finely washed etc)						
	SSR 2022-23 IT. NO 25.50 P.No.181						
	For G.L Beams	4	5.50	0.23	0.30	1.52	
		8	5.54	0.23	0.30	3.06	
	Lintels	4	5.50	0.23	0.30	1.52	
		8	5.54	0.23	0.30	3.06	
	Roof Beams	4	5.50	0.23	0.30	1.52	
		8	5.54	0.23	0.30	3.06	
					Total	13.74	Cu.M

IT	ITEM	No.	L	W	H / D	QTY	UNIT
			In Mtr.	In Mtr.	In Mtr.		
8	Providing second class Burnt Brick masonry with conventional/ I.S. type bricks in cement mortar 1:6 in foundations and plinth of inner walls/ in plinth external walls including bailing out water manually, striking joints on unexposed faces, raking out joints on exposed faces and watering etc. Complete.						
	SSR 2022-23 IT. NO.27.01 P.No.197						
	On External Upto GL	4	5.50	0.23	0.30	1.52	
	Ramp Walls Upto GL	6	4.92	0.23	0.30	2.04	
	Ramp Walls Above GL	2	6.14	0.23	0.30	0.85	
		3	6.14	0.23	(0.45+0.0)/2	0.95	
				Total	5.36	Cu.M	
9	Providing and laying Cast in situ/Ready Mix cement concrete M-20 of trap/ granite/ quartzite/ gneiss metal for R.C.C. chajja as per detailed design and drawings including steel centering, formwork, cover blocks compacting , curing , finishing and roughening the surface if special finish is to be provided and curing complete. (Excluding reinforcement and structural steel).with fully automatic micro processor based PLC with SCADA enabled reversible Drum Type mixer/ concrete Batch mix plant (Pan mixer) etc. complete. With fine aggregate (Natural Sand /Crushed sand VSI Grade finely washed etc)						
	SSR 2022-23 IT. NO 26.05 P.No.184						
	W	11	1.65	0.45	0.09	0.74	
	RS	3	5.80	0.45	0.09	0.70	
					Total	1.44	Cu.M
10	Providing and fixing in position TMT - FE - 500 bar reinforcement of various diameters for R.C.C. pile caps, footings, foundations, slabs, beams columns, canopies, staircase, newels, chajja, lintels pardis, copings, fins, arches etc. as per detailed designs, drawings and schedules. including cutting, bending, hooking the bars, binding with wires or tack welding and supporting as required complete.						
	SSR 2022-23 IT. NO 26.33, P.No.188						
			RCC Qty	Kg/Cum		Steel In Kg	
	Footing	1	6.35	50.00		317.50	
	Column	1	19.15	100.00		1915.00	
	Beams	1	13.74	100.00		1374.00	
	Chajja	1	1.44	50.00		72.00	
					Total	3678.50	Kg.
						3.68	M.T
	11	Filling in plinth and floors with approved excavated material in 15cm. to 20cm. layers including watering and compacting etc. complete.					
SSR 2022-23 IT. NO.21.36 P.No.157							
80% Qty As per It No.2		1	5.67			5.67	
				Total	5.67	Cu.M	

IT	ITEM	No.	L	W	H/D	QTY	UNIT
			In Mtr.	In Mtr.	In Mtr.		
12	Filling in plinth and floors with contractors material/brought from outside and approved by Engineer incharge in layers of 15 cm to 20 cm including watering and compaction etc. complete.						
	SSR 2022-23 IT. NO.21.37 P.No.157						
	Column Trenches Refilling	7	1.50	1.50	0.90	14.18	
	Deduct Qty as per It.No.11					-5.67	
	Deduct Vol.PCC of Footing					-6.35	
	Hall	1	24.54	12.06	0.35	103.58	
					Total	105.74	Cu.M
13	Providing second class Burnt Brick masonry with conventional/ I.S. type bricks in cement mortar 1:6 in superstructure including striking joints, raking out joints, watering and scaffolding etc. Complete						
	SSR 2022-23 IT. NO.27.05 P.No.197						
	On External Plinth Beams	4	5.50	0.23	3.00	15.18	
		1	5.54	0.23	3.00	3.82	
	Deductions						
	R.S	-1	5.50	0.23	3.80	-4.81	
	W	-7	1.50	0.23	0.60	-1.45	
					Total	12.74	CuM
14	Providing and fixing steel window C.R.C. sheet as per I.S. 1513 : 1986. gauge sect. 65 x 40 x 25 mm shutter single sheet of 24 gauge single leaf joined by fusion welding at appropriate points with vertical grooves of 15 mm wide and 15 mm deep at a distance of 45 mm. The first and last rib should be 60 mm away from vertical edge of the shutter. the shutter shall be welded, with angle to from the periphery of the shutter. At the center of the frame there shall be angle welded to bifurcate the frame into segments with two leaf shutter square 12 mm square inward bars at 120 mm center with all accessories						
	SSR 2022-23 IT. NO 39.21, P.No.247						
	W	7	1.50		1.20	12.60	
					Total	12.60	Sq.M
15	Providing and fixing rolling shutter fabricated from steel laths of minimum thickness 0.9 mm with lock plate of 3.15 mm thickness reinforced with 35 x 35 x 5 mm angle section fitted with sliding bolts and handles for both sides, deep M.S. channel section of depth and thickness not less than 65 mm and 3.15 mm respectively with hold fast arrangements, M.S. Bracket plate 300 x 300 x 3.15 mm minimum size and shape with square bar, suspension shaft of minimum 32 mm diameter, hood cover of M.S. sheet not less than 0.9 mm thickness and of any size at top and safety devices including mechanical gear operation arrangement consisting of worm gear wheels and worms of high grade cast iron or mild steel and one coat of red lead primer etc. complete. (I.S. 6248:1979) (Without mechanical gear)						
	SSR 2022-23 IT. NO 39.24, P.No.248						
	R.S	1	5.54		3.00	16.62	
					Total	16.62	Sq.M

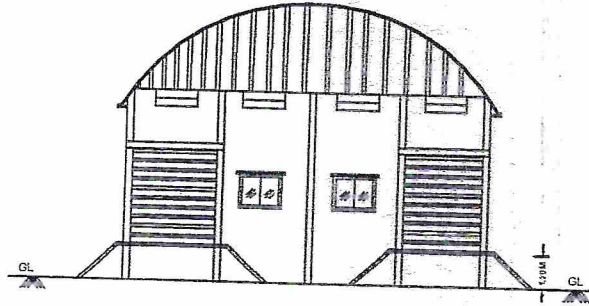
IT	ITEM	No.	L	W	H / D	QTY	UNIT
			In Mtr.	In Mtr.	In Mtr.		
16	Providing internal cement plaster 12mm thick in single coat in cement mortar 1:5 without neeru finish to concrete or brick surfaces, in all positions including scaffolding and curing etc. complete.						
	SSR 2022-23 IT. NO.32.03 P.No.209						
	Internal Walls	1	24.54		3.30	80.98	
		2	12.06		3.30	79.60	
	RS	1	5.54		3.00	16.62	
	W	7	1.50		1.20	12.60	
					Total	189.80	Sq.M
17	Providing internal cement plaster 20mm thick in two coats in cement mortar 1:5 without neeru finish, to concrete, brick surface, in all positions including scaffolding and curing etc. complete						
	SSR 2022-23 IT. NO 32.06 P.No.209						
	Externally	2	1.50		5.15	15.45	
	Sides	1	12.52		5.15	64.48	
	Back Sides	1	25.00		0.75	18.75	
	Chajja Plaster(7x2)	14	1.65	0.45		10.40	
	(1x2)	1	6.75	0.45		3.04	
	Deductions						
	R.S	-1	5.54		3.00	-16.62	
	W	-7	1.50		0.60	-6.30	
					Total	89.20	Sq.M
18	Providing and laying Rough Shahabad Stone Flooring 40mm.to 45 mm. thick and of required width in plain/ diamond pattern on a bed of 1:6 C.M. including cement float, striking joints, pointing in cement mortar 1:3 curing and cleaning etc. etc. complete						
	SSR 2022-23 IT. NO 33.02, P.No.213						
	WareHouse	1	24.54	12.06		295.95	
					Total	295.95	Sq.M
19	Providing and fixing self supporting steel roofing system (Proflex) for a Godown or alike made up of structural grade steel sheet of 912 millimeter width (tolerance +/- 2 millimeter), moulded at site using mechanical press dies to the desired curve and shape to form 605 millimeter wide						
	SSR 2022-23 IT. NO 38.04, P.No.233						
	Roof	1	25.74	13.26		341.31	
						341.31	SqM
20	Providing and fixing corrugated galvanised iron sheets of 0.63mm thick (24 B.W.G.)for roofing without wind tiles including fastening with galvanised iron screws and bolts,lead and bitumen washers as per drawing etc.complete.(Weight of 5.5 kg/sq.m.).						
	SSR 2022-23 IT. NO 38.04, P.No.233						
	Gable End	1	77.05			77.05	
						77.05	SqM

IT	ITEM	No.	L	W	H/D	QTY	UNIT
			In Mtr.	In Mtr.	In Mtr.		
21	Providing and applying two coats of water proof cement paint of approved manufacture and of approved colour to the plastered surfaces including scaffolding if necessary, cleaning and preparing the surface. watering for two days etc. complete. SSR 2022-23 IT. NO 35.13, P.No.224						
	Qty as per I No.17						
						89.20	
						89.20	SqM
22	Providing and applying washable oil-bound distemper of approved colour and shade to old and new surfaces in two coats including scaffolding, preparing the surfaces. (excluding the primer coat.)etc. complete. SSR 2022-23 IT. NO 35.13, P.No.224						
	Qty as per I No.16						
						189.80	
						189.80	SqM
23	Royalty Charges for murrum, soil,60mm./40mm. Metal (Hand Broken)etc.						
	Soling Qty as per I No.3	44.39	X	1.00		44.39	
	PCC Qty as per I No.4	31.36	X	0.70		21.95	
	For Murrum as per I No.12	105.74	X	1.00		105.74	
						172.08	CuM
24	Royalty Charges for murrum, soil,60mm./40mm. Metal (Hand Broken)etc.						
	12mm plaster Qty as per I No.16	189.80	X	0.015		2.85	
	20mm plaster Qty as per I No.17	89.20	X	0.025		2.23	
						5.08	CuM

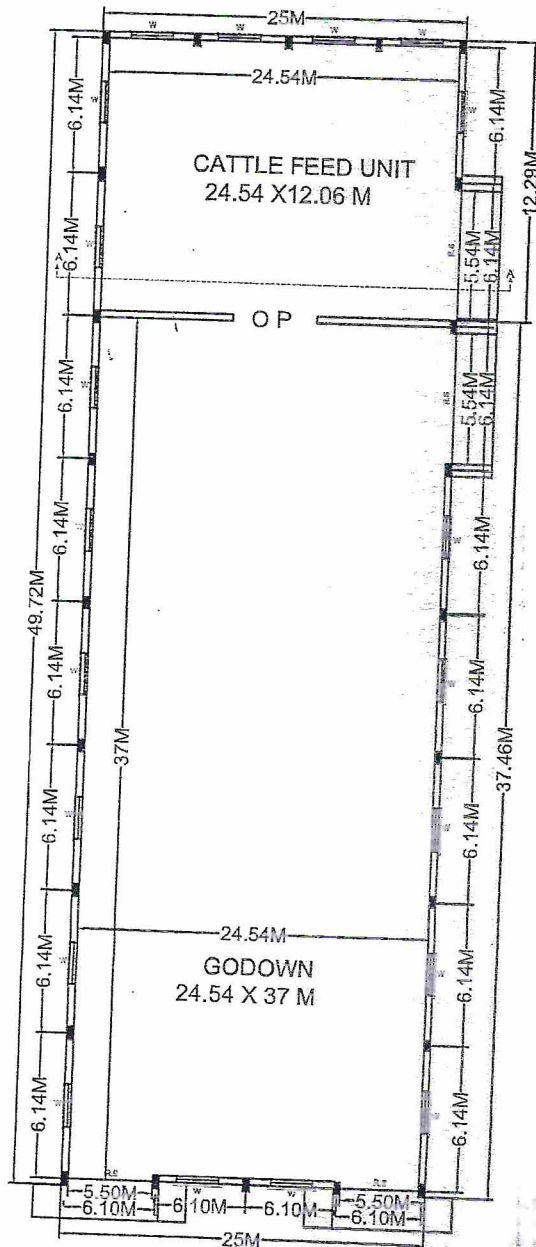
AEI.F.

Engineer
PL/00135

**Name of Work :- Construction of Warehouse For Shri Sai Krushi
Farmers Producers Company Limited On Gat No.165 At Post Parand
Tq.Paranda Dist.Osmanabad-413502**



ELEVATION
SCALE 1:100



PLAN
SCALE 1:100

Handwritten signature: A. S. K.
 A. S. K. M. B. A. T. G.
 CIVIL ENGINEER
 REG. NO. 10082/2010